



# 4400 Series

# STINGER 4485

## 4485 Capacity and Range Chart:

OPERATING HEIGHT	LOAD RATINGS IN LBS. WITH OUTRIGGERS EXTENDED					AREA OF OPERATION
	27 FT	42 FT	56 FT	70 FT	85 FT	
5	44000					<p>360° FULL CAPACITY WORK AREA</p>
8	31300	27000				
10	26350	25000				
12	22700	21425	18575			
14	19900	18675	16100	13000		
16	17600	16550	14175	12100		
20	13800	13400	11375	9700	9550	
25	8000	10650	9000	8750	7375	
35		8600	7325	7000	6875	
40		6700	6900	5850	5650	
45		8	3650	5775	4900	4700
50				4550	4650	3950
55				3525	3675	3750
60					2950	3025
65					2400	2425
70					1800	1950
75						35
80						28
	700	500	350	300	250	STOWED JIB DEDUCTIONS

DEDUCTIONS FROM RATED LOADS FOR HANDLING DEVICES

- OVERHAUL BALL: 175 LBS.
- 1 SHEAVE LOAD BLOCK: 200 LBS
- 2 SHEAVE LOAD BLOCK: 250 LBS
- AUX SHEAVE: 50 LBS

NOTE: RATINGS ABOVE THE HEAVY LINE ARE BASED ON STRUCTURAL COMPETENCE AND NOT ON MACHINE STABILITY.

JIB CAPACITIES FOR ALL BOOM LENGTHS

CAPACITY ALERT SYSTEM, IF SO EQUIPPED, IS NOT FUNCTIONAL WHEN LIFTING WITH JIB								
LOADED BOOM ANGLE	50°	55°	60°	65°	70°	75°	80°	
RETRACTED 26 FT JIB	0° OFFSET: 850	1025	1525	2325	3225	4325	4925	5325
	15° OFFSET: 600	750	925	1375	1750	2000	2000	2000
	30° OFFSET: 500	600	675	975	1175	1275	1275	1275
EXTENDED 40 FT JIB	0° OFFSET: 525	725	1125	1525	2025	2525	2825	3125
	15° OFFSET: 450	525	675	850	1025	1100	1100	1100
	30° OFFSET: 400	450	550	650	750	750	750	750

**NOTE:** Please consult the Terex Cranes full-line brochure for a complete listing of standard features and optional equipment.

## 4485 Optional Mounting Configurations:

Behind Cab (TC)  
Rear Mount (RM)

(Some standard features for the optional mounting configurations will vary. Please consult your Terex Cranes dealer or factory for chassis and mounting requirements.)

## TC 4485 Minimum Chassis Requirements:

Chassis specifications are minimum for truck-crane mount. Not applicable to optional mounting configurations.

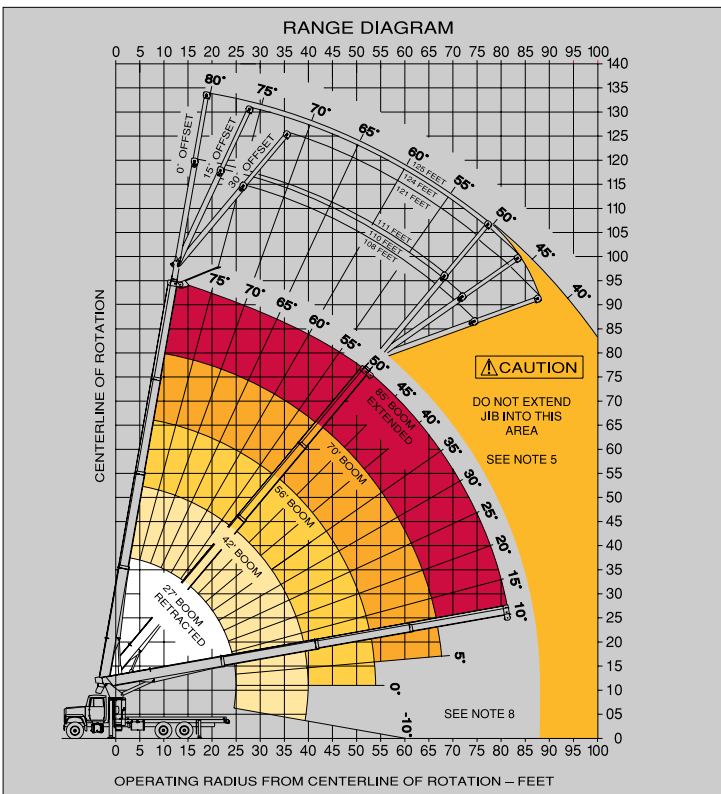
- Gross Vehicle Weight Rating . . . . . 52,000 lbs. (23,587 kg)
- Front Axle Weight Rating . . . . . 18,000 lbs. (8,165 kg)
- Rear Axle Weight Rating . . . . . 34,000 lbs. (15,422 kg)
- Wheelbase . . . . . 246 in. (6,248 mm)
- Cab To Axle . . . . . 168 in. (4,267 mm)
- Afterframe . . . . . 100 in. (254 mm)
- Transmission . . . . . Heavy-Duty 6-Bolt PTO (Neutral lock-up required for automatic transmission)
- Electrical System . . . . . Heavy-Duty
- Cooling System . . . . . Heavy-Duty
- Frame Section Modulus . . . . . .26 in.<sup>3</sup> (426 cm<sup>3</sup>)
- RBM Per Frame Rail . . . . . 2,860,000 in./lbs. (32,955 kg-m)

## Rope and Reaving:

1 PART LINE	2 PART LINE	3 PART LINE	4 PART LINE	5 PART LINE	<p><b>CAUTION</b></p> <p>OVERLOAD AND ANTI-TWO-BLOCK SYSTEMS MUST BE IN GOOD OPERATING CONDITION BEFORE OPERATING CRANE. REFER TO OWNER'S MANUAL.</p> <p>KEEP AT LEAST 3 WRAPS OF LOADLINE ON DRUM AT ALL TIMES.</p> <p>USE ONLY 9/16" DIAMETER CABLE WITH 33,600 LB. MIN. BREAKING STRENGTH ON THIS MACHINE.</p>
LOADS UP TO 9,500 LBS. STD. CABLE	LOADS UP TO 19,200 LBS. STD. CABLE	LOADS UP TO 28,800 LBS. STD. CABLE	LOADS UP TO 38,400 LBS. STD. CABLE	LOADS UP TO 48,000 LBS. STD. CABLE	
6,720 LBS. ROT. RESIST. CABLE	13,440 LBS. ROT. RESIST. CABLE	20,160 LBS. ROT. RESIST. CABLE	26,880 LBS. ROT. RESIST. CABLE	33,600 LBS. ROT. RESIST. CABLE	

THIS MACHINE COMPLIES WITH OSHA REGULATIONS 1910.180 AND 1926.550 WHERE APPLICABLE AT DATE OF MANUFACTURE

34854-00933



NOTE: Diagrams depict recommended mounting dimensions. The dimensions of optional mounting configurations will vary. Please consult your dealer or Terex Cranes for specifics. Dimensions do not include load deflection.